

Plum pox symptoms on Encore peach (note rings on fruit and chlorotic areas on leaves, below.)



If you suspect plum pox, contact an MSU Extension horticultural agent or the Michigan Department of Agriculture for diagnostic assistance:

Southwest - Mark Longstroth or Bill Shane
(616) 657-7745 (ext. 215) or
(616) 944-1477 (ext. 205)

Fruit Ridge - Phil Schwallier or Amy Irish-Brown
(800) 767-1345

Northwest - Jim Nugent or Gary Thornton
(231) 946-1510

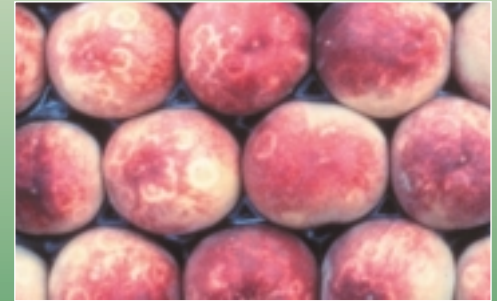
Southeast - Bob Tritten
(810) 732-2177

Michigan Department of Agriculture
(517) 373-1087

Slides provided by R. Scorza, R. Welliver and M. Danilovich

MSU is an affirmative-action, equal-opportunity institution. Michigan State University Extension programs and materials are open to all without regard to race, color, national origin, gender, religion, age, disability, political beliefs, sexual orientation, marital status, or family status. Issued in furtherance of MSU Extension work, acts of May 8 and June 30, 1914, in cooperation with the U.S. Department of Agriculture, Arlen Leholm, Extension Director, Michigan State University, E. Lansing, MI 48824.
New 3:00-KMF/LP, 50¢, single copy free to Michigan residents.

Plum Pox



Rings on peach fruit due to plum pox.

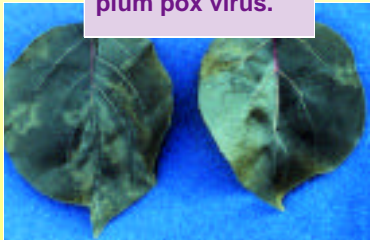
MICHIGAN STATE
UNIVERSITY
EXTENSION



For the latest information on plum pox on the Web: <http://sharka.cas.psu.edu/>

Apricot and Plum Trees

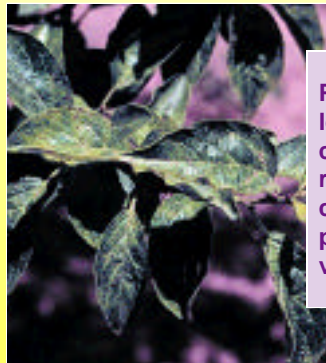
Apricot leaves with chlorotic rings caused by plum pox virus.



Chlorotic rings on apricot fruit.



Rings on apricot seeds.



Plum leaves with chlorotic rings caused by plum pox virus.



Plum fruit with rings (on right) and distorted fruit (photo on left).

Plum fruit drop due to plum pox.

