

Emerald Ash Borer Treatment Survey

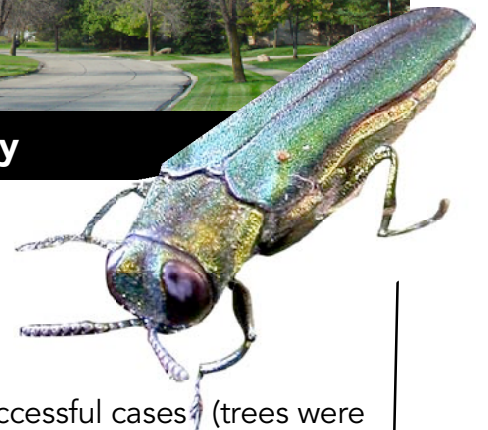
Do you have experience managing Emerald Ash Borer?

If you have used insecticides to protect ash trees from emerald ash borer, we want to hear from you!

We would like you to take part in an on-line survey. The goal of the survey is to collect information on the effectiveness of different insecticide products and control strategies used for EAB control in southeastern Michigan.

We realize that arborists and landscapers in southeast Michigan have more experience with emerald ash borer control than anyone else in the world!

By participating in the survey, you will help other arborists and landscapers identify and implement effective treatments to protect ash trees. Information collected in this survey will also help guide future research and development of EAB management strategies.



How to participate in the survey

Go to: www.surveymonkey.com/s.asp?u=217032898242

Please complete the survey at your earliest convenience.

This survey takes a "case study" approach.

You will have an opportunity to tell us about as many as three successful cases (trees were protected from EAB damage) and as many as three unsuccessful cases (trees were killed by EAB despite treatment).

You will need roughly 15 minutes to answer the questions for each case

Completely confidential

Information that you provide will be pooled with responses from others. There is no way to track individual responses nor will your responses be used for any marketing purpose

Please contact us with any questions regarding this survey
Shawn Bernick 952-252-0547 or Dr. Deborah G. McCullough 517-355-7445

MICHIGAN STATE
UNIVERSITY



We appreciate your interest in this project and your willingness to participate in the survey.

Thank You