

Index to the 2005 Field Crop CAT Alert newsletters

This index lists pest management and field crop production topics that were addressed in the newsletters. Sightings and counts of specific insects or diseases were reported in many issues and are not included in the index. Numbers to the left of the topic indicate the issue publication date.

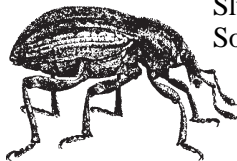
Crop specific pest management

Topic	Date of issue
Corn	
Burndown herbicides	4-21
Cold weather stress	5-19
Corn rootworm	4-21, 9-22
Delayed herbicides	5-12
Emergence	4-21
European corn borer	4-21
Flea hopper	4-21
Grain yield determination	6-16
Grubs	4-21
Purple corn	6-2
Slugs	4-21
Weed control	5-26
Weed escapes, herbicides	5-26
Dry beans	
Preharvest treatments	8-25
Reflex, Section 18	5-5
Weed control	4-21
Potatoes	
Blackleg	6-23
Disease web site	6-23

Topic	Date of issue
Soybeans	
Ballad	5-26
Bean leaf beetle	4-21
Burndown herbicides	4-21, 5-5
Cold weather stress	5-19
Glyphosate, maximizing	6-9
Grubs	4-21
Slugs	4-21
Weed control	4-21, 5-26
Programs in 2004	3-1
Weeds in non-GMO soybeans ..	4-21, 5-26
Sugar beets	
Eminent	5-5
Herbicide labels	4-7
Springtails	5-19
Weed management	4-21, 5-12
Wheat	
Fusarium head blight	5-12
Spring assessment	3-1
Weed management	4-21

Insect pest management

Topic	Date of issue
Alfalfa weevil	5-12, 5-19, 6-16
Armyworm	7-28
Bean leaf beetle	4-21, 7-28
Beneficial insects	6-23
Black cutworm	5-19
Corn rootworm	4-21, 7-28, 9-22
European corn borer	4-21, 6-23, 6-30
Flea hopper	4-21
Grubs	4-21
Pea aphid	6-30
Potato leafhopper	5-19
Seed treatments	5-12
Slugs	4-21
Soil pests	5-12



Topic	Date of issue
Soybean aphid	5-19, 5-23, 6-2, 6-16, 6-30, 7-14, 7-28, 8-11
Control	6-23
Egg hatch, central Michigan	4-21
Orthene	7-28
Predators	7-14
Prediction, 2005	3-1
Reproduction on buckthorn	5-12
Scouting	6-23
with soybean rust	4-7
Speed scouting	5-26
Traps	7-14, 7-28
Updates	
Virus transmission	4-21
Spider mites	7-28
Springtails, sugar beets	5-19

Weed management

Topic	Date of issue
2,4-D reregistration	9-8
2005 Weed Control Guide for Field Crops	3-1

Topic	Date of issue
Burndown herbicides, corn and soybeans	4-21, 5-5
Corn programs, 2004 comparisons	3-1

Index to the 2005 Field Crop CAT Alert newsletters *continued*

Weed management *continued*

Topic	Date of issue	Topic	Date of issue
Crabgrass	6-2	Soybean programs, 2004 comparisons	3-1
Dandelion control	5-12	Sugar beet weed management	4-21
Delayed herbicides, corn	5-12	Weed competition in	
Glyphosate, maximizing in		Roupdup Ready soybeans	6-9
Roundup Ready Soybeans	6-9	Weed escapes, soil-applied	
Glyphosate-resistant weeds	3-1	herbicides in corn	5-26
Herbicide resistance, horseweed	4-7	Wheat harvest, managing annual weeds	7-28
Non-GMO soybeans, weed control	4-21	Wheat weed management	4-21
Reflex, Section 18	5-5		

Plant disease management

Topic	Date of issue	Topic	Date of issue
Blackleg	6-23	Host plants	4-7
Downy mildew	9-22	Management considerations	4-7
Folicur, Section 18	6-2	Taking action	6-9
Fusarium head blight, wheat	5-12	Updates	6-2, 6-30, 7-14, 7-28, 8-11,
Potato disease web site	6-23	8-25, 9-8, 9-22
Powdery mildew, wheat	6-2	Florida	5-12
Septoria leaf blotch	6-2	Georgia	5-5, 5-12
Soybean rust		Storms increasing disease	6-23
Applying fungicides	3-1	Stripe rust	6-2
Background and information	3-1	Virus transmission, soybean aphid	4-21
Ballad	5-26	Wheat scab, prediction models	6-9
Crop insurance	3-1	White mold	9-22
General information	3-1, 4-21		

Miscellaneous

Topic	Date of issue	Topic	Date of issue
2005 Weed Control Guide for		Herbicide resistance screening	8-25
Field Crops	3-1	Manganese deficiency	6-30
Agricultural economics	4-7	Nitrogen use	4-7
Alfalfa fertilization after first cutting	6-2	Credits	6-16
Compost application	6-30	Loss from urea	4-21
Cover crops, alternatives	9-8	Plant tissue analysis	6-2
Crop insurance	3-1	Potash management strategies	4-7
Delaying harvest	9-8	Potassium management	6-30
Diane Brown-Rytlewski, welcome	9-22	PSNT	4-7, 5-12, 6-16
Disaster resources	6-16	Soil quality	6-23
Emergency resources	6-16	Sprayer tune-up	3-1
Farm bill, input requested	9-8	Transporting agricultural supplies	5-5
Fertilizer	4-7	Web site	
Managing inputs	3-1	Chat n' chew	5-5
Fungicide precautions	7-14	Soybean aphid and soybean rust	5-15

